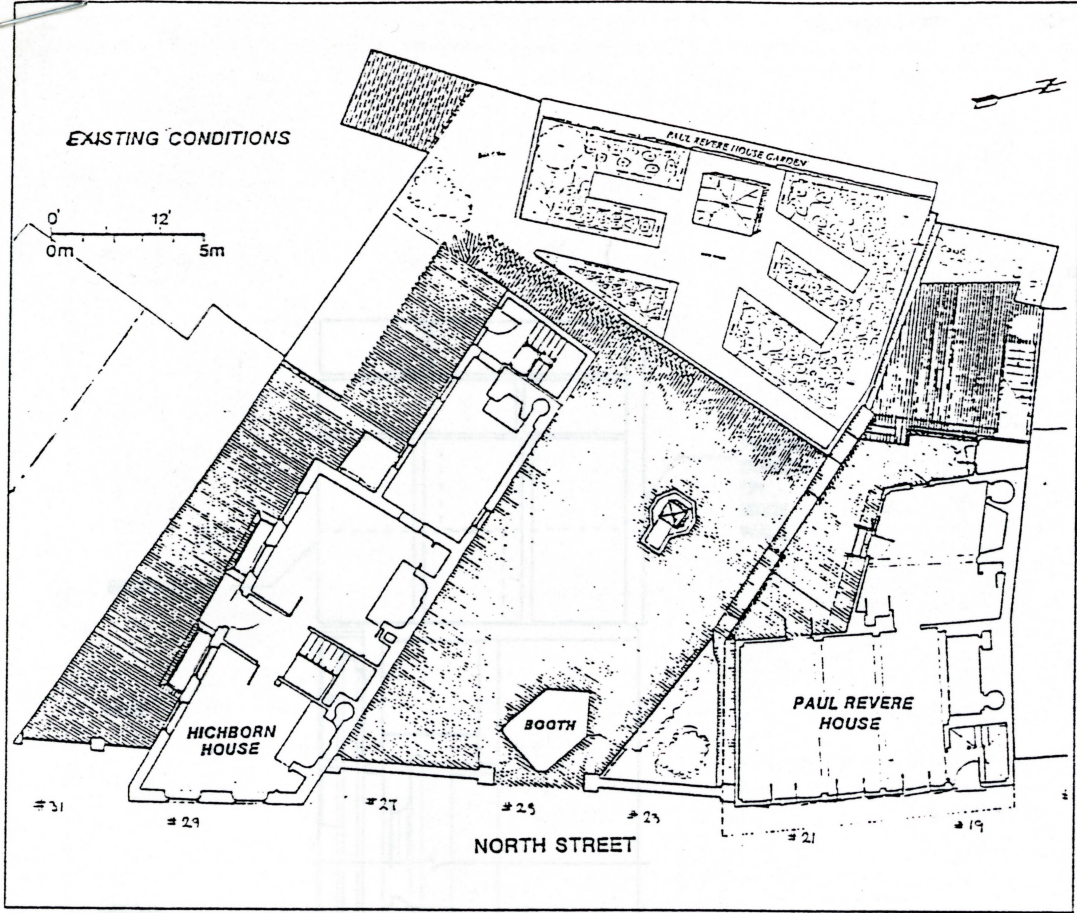
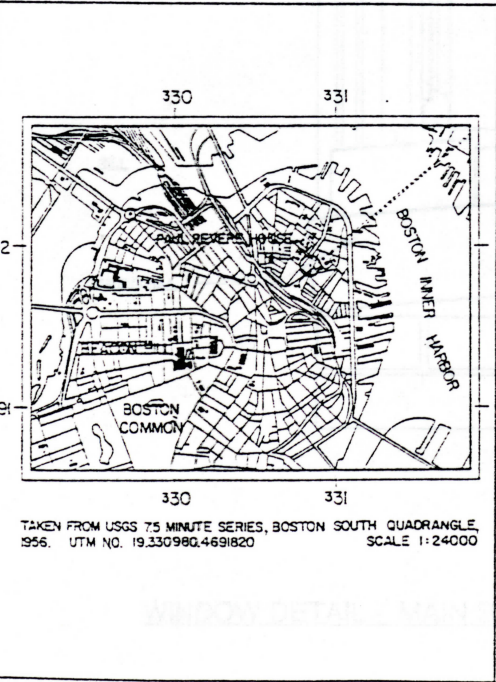


HICHBORN HOUSE



SITE PLAN -



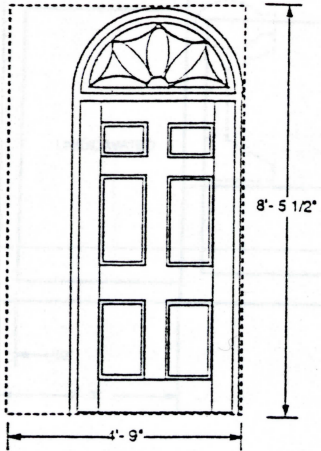
LOCATION PLAN -

Hichborn House, one of Boston's earliest remaining and best-preserved Colonial Period homes, is a three-story, one-room deep slate-roofed brick townhouse constructed ca.1711 by Moses Pierce, glazier. His home represented the prosperity of the town's enterprising tradesmen and its large windows displayed the ware's of Pierce who advertised window glass and glazier's supplies for sale.

The house was later owned by Nathaniel Hichborn, Paul Revere's cousin, who was a boatbuilder. The Hichborn family added the rear two-story ell ca.1800 and remodelled the front doorway in the Federal style. They also decorated the interior with wallpapers similar to those advertised for sale at their famous cousin Paul Revere's shop.

Remodelled with shops added to its front in the Victorian Period ca. 1865, the house was purchased and restored in 1949 by the Moses Pierce Williams House Association. Designated a National Historic Landmark in 1968, Hichborn House is presently owned and operated by the Paul Revere Memorial Association.

BUILDING DESCRIPTION:



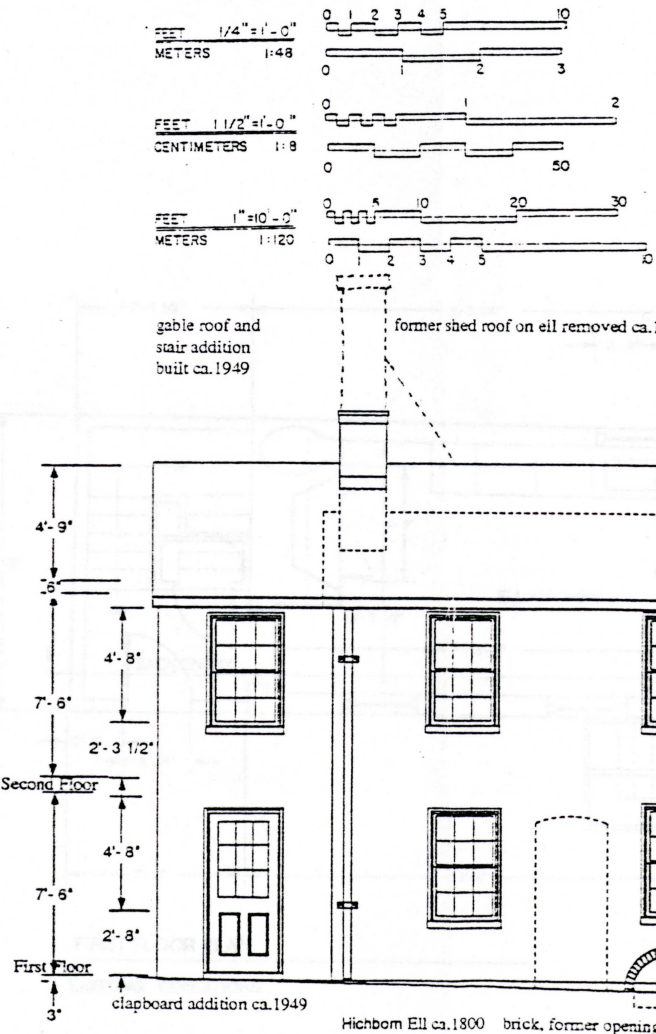
CA.1800 DOORWAY
(OPENING REMOVED CA. 1950)

PROJECT DESCRIPTION:

Hichborn House is cooperatively maintained by the Paul Revere Memorial Association with the assistance of the National Park Service. It is an important component of the Boston National Historic Park which also includes Old North Church, Old South Meetinghouse, Faneuil Hall and the Old State House, along with the U.S.S. Constitution in the Boston Naval Shipyard and Bunker Hill Monument in Charlestown. The present HABS documentation project was initiated in 1995 at the request of the administrative offices of the Paul Revere Memorial Association. The firm of McGinley Hart & Associates provided the team comprised of principal Architect David M. Hart, Historical Architect Frederic C. Detwiller, and Lana Yoon of the Massachusetts Institute of Technology. The drawings are based upon Charles Strickland's 1949 set, revised and updated.

LIST OF DRAWINGS:

1. TITLE SHEET - SITE PLAN, SOUTH ELEVATION, DETAILS
2. BASEMENT AND FIRST FLOOR PLANS, DETAILS
3. SECOND AND THIRD FLOOR PLANS, DETAILS
4. EAST, NORTH, WEST ELEVATIONS, DETAILS
5. SECTION A-A', INTERIOR DETAILS



SOUTH (FRONT) ELEVATION



12 over 12 windows restored ca.1949
former doorways closed, front door restored 1949
former 19th century addition (dotted) over passage
Pierce House Main Block ca.1711 brick

SCALE OF FEET
0 2 4 6 8

NAME AND LOCATION OF STRUCTURE

HICHBORN HOUSE (MOSES PIERCE-HICHBORN)
BOSTON
SUFFOLK COUNTY

SURVEY NO.

HISTORIC AMERICAN
BUILDINGS SURVEY

SHEET 1 OF 5 SHEETS

LIBRARY OF CONGRESS
INDEX NUMBER

PAUL REVERE MEMORIAL ASSOCIATION
BOSTON NATIONAL HISTORICAL PARK

29 - 31 NORTH SQUARE

MASSACHUSETTS

DRAWN BY: , MCGINLEY HART & ASSOCIATES DATE: