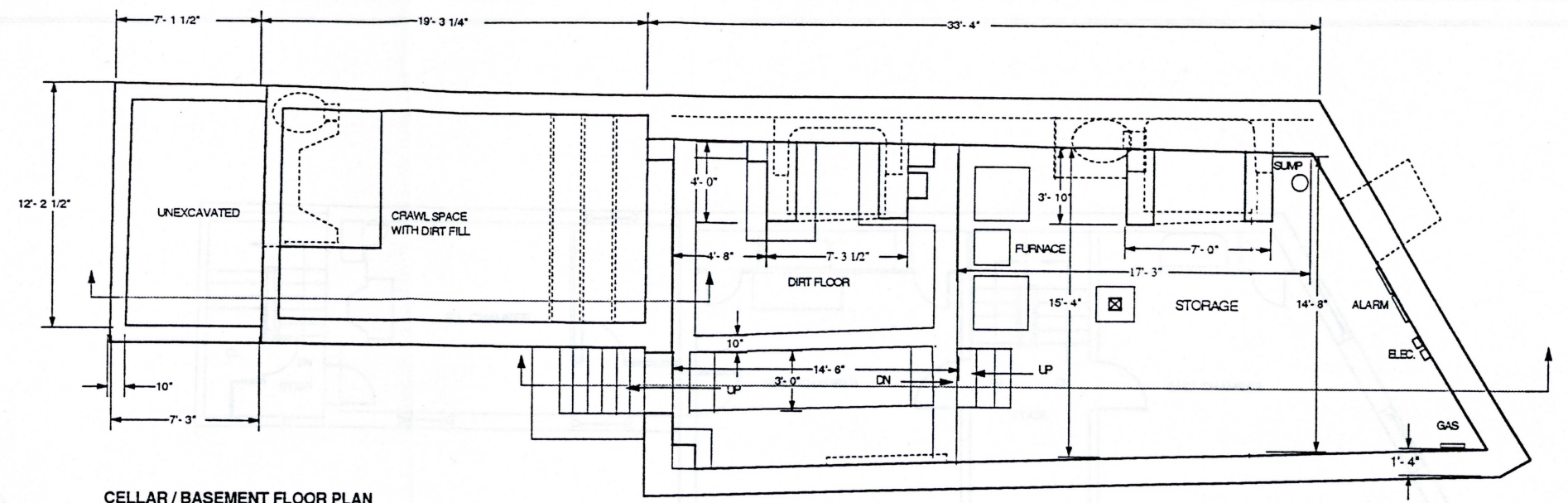


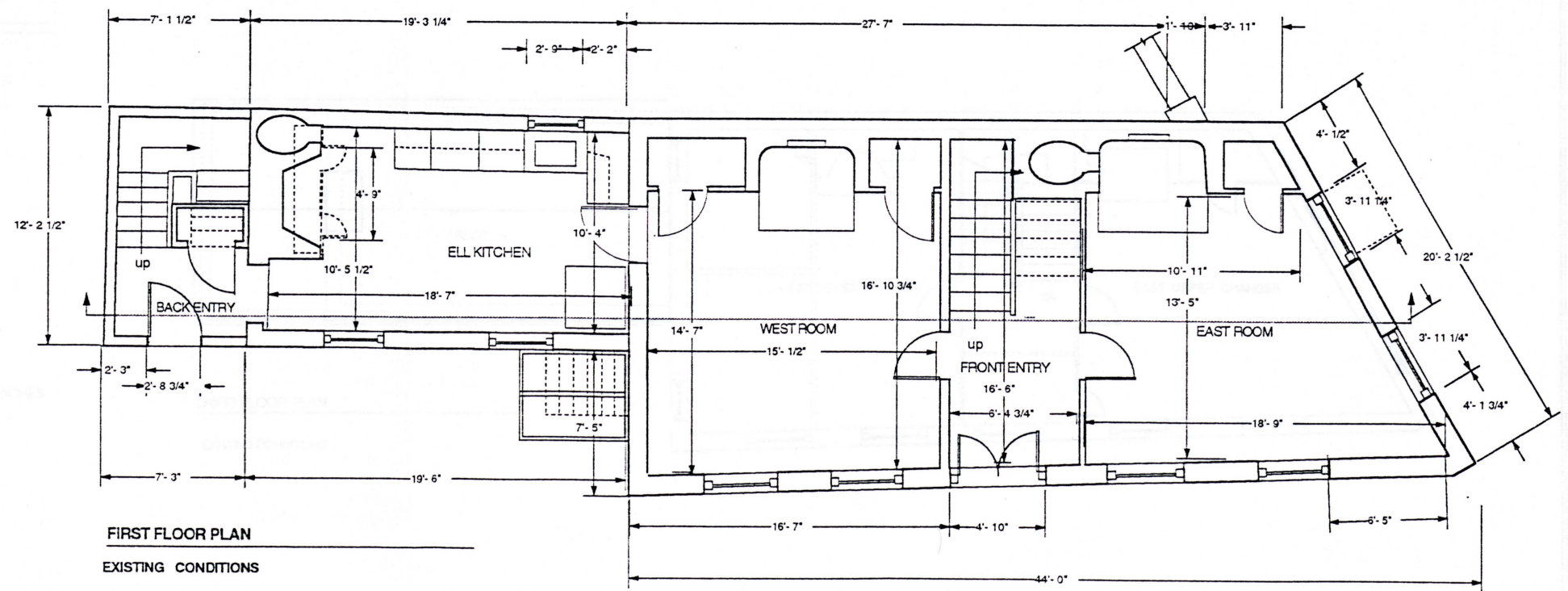
WINDOW DETAIL - MAIN BLOCK

0 1 2 3 INCHES



CELLAR / BASEMENT FLOOR PLAN

EXISTING CONDITIONS



FIRST FLOOR PLAN

EXISTING CONDITIONS

SCALE OF FEET

DRAWN BY: MCGINLEY HART & ASSOCIATES DATE:

PAUL REVERE MEMORIAL ASSOCIATION BOSTON NATIONAL HISTORICAL PARK	29 - 31 NORTH SQUARE	NAME AND LOCATION OF STRUCTURE HICHBORN HOUSE (MOSES PIERCE-HICHBORN) BOSTON SUFFOLK COUNTY	MASSACHUSETTS	SURVEY NO. MA-499	HISTORIC AMERICAN BUILDINGS SURVEY SHEET 2 OF 5 SHEETS	LIBRARY OF CONGRESS INDEX NUMBER
---	----------------------	--	---------------	----------------------	---	----------------------------------